



# CAMBRIDGE

7TH JULY - 11TH AUGUST 2024

AGES  
5-15\*



CAMBRIDGE Family Program

## THE LOCATION

The St Giles Family Course in Cambridge offers families the opportunity to study in a beautiful, safe and historic city. Home to one of the world's most famous and prestigious universities, Cambridge is the perfect location for families to study English and experience British culture.

St Giles Cambridge has an enviable location, just minutes from the railway station, and within easy walking distance of the city centre. On this programme, parents can study English in the mornings at our year-round adult school, St Giles Cambridge, whilst children have lessons in classrooms nearby.

## THE LOCATION



**Adult location:**  
St Giles Cambridge  
52 Bateman St,  
Cambridge CB2 1LR



**Cambridge Station** is the nearest train station (10 min walk from the school)



**City centre** is only a 15 min walk away from the school.



**24/7 Phone Line:** TBC

**Children location:**  
St Marys 6th Form Centre  
2 Brookside, Cambridge,  
CB2 1JE



Arrival & Departure  
**Sundays**



**Stansted** is the nearest airport (40 min drive)



**Capacity** is 60 children and their adult family members per week (1 adult and 1 child min per family).

## CLASSES & MEALS

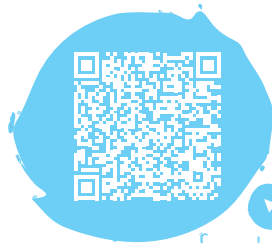


Classes take place:

- Parents: St Giles Cambridge (12 per class)
- Children: Location to be confirmed (15 per class)



Lunch will be provided on weekdays.  
Breakfast and dinner can be also provided as part of the homestay accommodation package for an additional fee.



Scan to view  
our photo gallery



Get your  
activity  
schedule!

## ACCOMMODATION



Full Package includes homestay accommodation with breakfast only\*\*

## THE PROGRAMME



**Levels of English**  
**Adults**  
Up to 5 levels

**Children**  
Up to 4 levels  
(A1-A2 to C1)



3 half-day activities per week

1 full-day excursion on Saturdays



**Adult course content:**

Modern course-book based lessons in General English classes.



**Children course content:**

Comprehensive theme-based syllabus focusing on language development, project work and communicative competence.



20 lessons per week

End of course certificate included.

\*\* Accommodation for families is provided in homestay accommodation. Alternatively, we can provide information for families who prefer accommodation in a hotel or self catering apartment for additional fees.

\* Students who are 14 and over may study in the adult school.